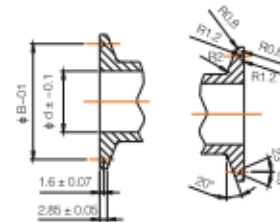
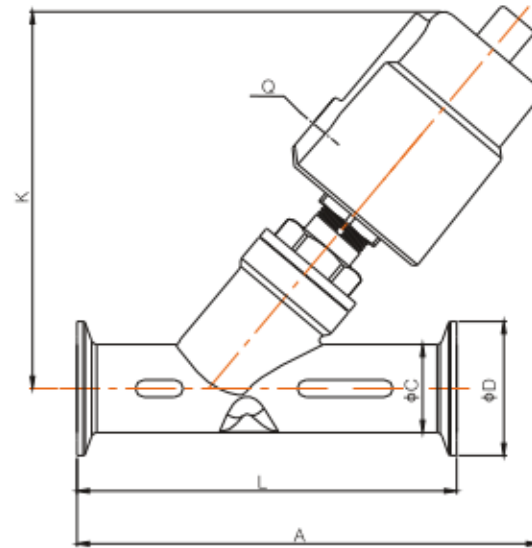


Tri-clamp Ends Angle Seat Valve

ESG[®]


Clamp Specification:
ISO2852-1993, customization available.

Main Dimension

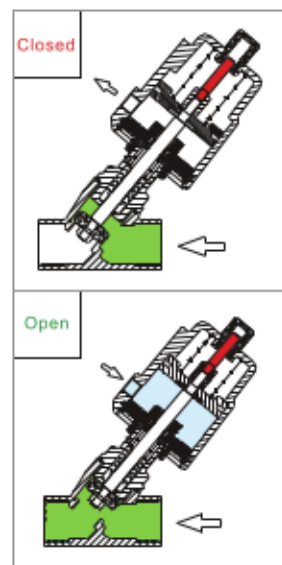
Size	Actuator (mm)	Q	A	K	L	C	B	ϕd	ϕD
DN15	40	1/8"	130	115	80	19	27.5	15	34
	50	1/8"	140	126					
DN20	50	1/8"	158	148	130	25	43.5	19	50.5
	63	1/8"	175	163					
DN25	50	1/8"	165	140	130	32	43.5	27	50.5
	63	1/8"	188	166					
DN32	63	1/8"	200	174	146	37	43.5	31	50.5
	90	1/8"	245	223					
	90AL	1/8"	242	222					
DN40	63	1/8"	210	175	160	40	56.5	33	64
	90	1/8"	255	223					
	90AL	1/8"	254	222					
DN50	63	1/8"	221	185	175	53	56.5	45	64
	90	1/8"	265	235					
	90AL	1/8"	265	232					
	125AL	1/4"	325	296					
DN65 Square opening	90	1/8"	325	280	278	75	83.5	66	91
	90AL	1/8"	320	280					
	125AL	1/4"	360	330					
DN80 Square opening	125AL	1/4"	360	352	290	89	97	78	106

Pressure Data Sheet

Single Acting, Normally Closed (NC) – Enter Above Seat

Suitable for condensable media, such as air, steam, and low pressure liquid media.

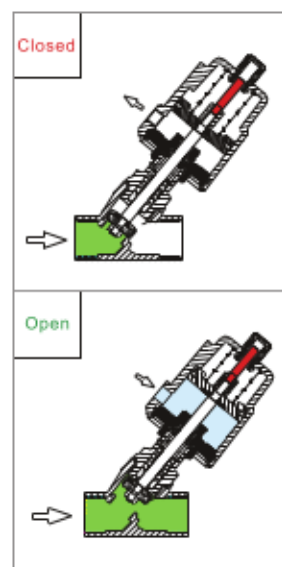
Size	Thread end	Orifice (mm)	Kv (m ³ /h)	Actuator (mm)	ΔP (MPa)	Control pressure (MPa)
DN10	G3/8"	13	3.8	40	0–1.6	0.3–0.45
				50	0–1.6	0.3–0.35
DN15	G1/2"	13	4.7	40	0–1.6	0.3–0.45
				50	0–1.6	0.3–0.35
DN20	G3/4"	18	9.5	50	0–1.6	0.3–0.4
DN25	G1"	24	18.1	50	0–1.6	0.3–0.45
				63	0–1.6	0.3–0.35
				90	0–1.6	0.2–0.25
DN32	G1–1/4"	31	23.1	63	0–1.6	0.3–0.55
				90	0–1.6	0.2–0.35
DN40	G1–1/2"	35	32.9	63	0–1.6	0.3–0.65
				90	0–1.6	0.2–0.4
DN50	G2"	45	52.8	63	0–0.9	0.3–0.7
				90	0–1.6	0.2–0.45
				125	0–1.6	0.2–0.3
DN65	G2–1/2"	61	82.6	90	0–1.0	0.2–0.6
				125	0–1.6	0.2–0.4
DN80	G3"	80	127	125	0–1.2	0.2–0.7



Single Acting, Normally Closed (NC) – Enter Below Seat (NO Water-hammer)

Flow enters below seat, avoid water hammer

Size	Thread end	Orifice (mm)	Kv (m ³ /h)	Actuator (mm)	ΔP (MPa)	Control pressure (MPa)
DN10	G3/8"	13	3.8	40	0–1.3	0.4
				50	0–1.4	0.45
DN15	G1/2"	13	4.7	40	0–1.3	0.4
				50	0–1.4	0.45
DN20	G3/4"	18	9.5	50	0–1.4	0.45
DN25	G1"	24	18.1	50	0–0.8	0.45
				63	0–1.3	0.5
				90	0–1.4	0.35
DN32	G1–1/4"	31	23.1	63	0–0.6	0.5
				90	0–1.6	0.6
DN40	G1–1/2"	35	32.9	63	0–0.5	0.5
				90	0–1.6	0.6
DN50	G2"	45	52.8	63	0–0.3	0.5
				90	0–1.0	0.6
				125	0–1.6	0.55
DN65	G2–1/2"	61	82.6	90	0–0.6	0.6
				125	0–0.9	0.55
DN80	G3"	80	127	125	0–0.5	0.55
DN100	G4"	90	143	125	0–0.25	0.55

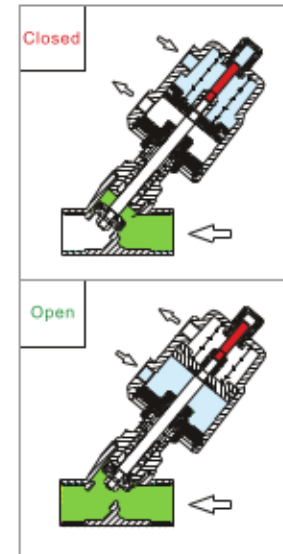


Pressure Data Sheet

Double Acting, Normally Closed (NC) – Enter Above Seat

Suitable for higher ΔP ; valve can close automatically in case of emergency.

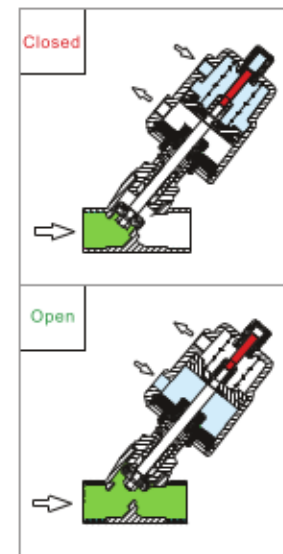
Size	Thread end	Orifice (mm)	Kv (m³/h)	Actuator (mm)	ΔP (MPa)	Control pressure (MPa)
DN10	G3/8"	13	3.8	40	0–1.6	0.3–0.45
				50	0–1.6	0.3–0.35
DN15	G1/2"	13	4.7	40	0–1.6	0.3–0.45
				50	0–1.6	0.3–0.35
DN20	G3/4"	18	9.5	50	0–1.6	0.3–0.4
DN25	G1"	24	18.1	50	0–1.6	0.3–0.45
				63	0–1.6	0.3–0.35
				90	0–1.6	0.2–0.25
DN32	G1–1/4"	31	23.1	63	0–1.6	0.3–0.55
				90	0–1.6	0.2–0.35
DN40	G1–1/2"	35	32.9	63	0–1.6	0.3–0.65
				90	0–1.6	0.2–0.4
DN50	G2"	45	52.8	63	0–0.9	0.3–0.7
				90	0–1.6	0.2–0.45
				125	0–1.6	0.2–0.3
DN65	G2–1/2"	61	82.6	90	0–1.0	0.2–0.6
				125	0–1.6	0.2–0.4
DN80	G3"	80	127	125	0–1.2	0.2–0.7



Double Acting, Normally Closed (NC) – Enter Below Seat(No Water-hammer)

Flow enters below seat, avoid water hammer, suitable for higher ΔP .

Size	Thread end	Orifice (mm)	Kv (m³/h)	Actuator (mm)	ΔP (MPa)	Control pressure (MPa)
DN10	G3/8"	13	3.8	40	0–1.6	≥ 0.3
				50	0–1.6	≥ 0.3
DN15	G1/2"	13	4.7	40	0–1.6	≥ 0.3
				50	0–1.6	≥ 0.3
DN20	G3/4"	18	9.5	50	0–1.6	≥ 0.3
DN25	G1"	24	18.1	50	0–1.3	0.3–0.6
				63	0–1.6	0.3–0.4
				90	0–1.6	0.2–0.3
DN32	G1–1/4"	31	23.1	63	0–1.6	0.3–0.6
				90	0–1.6	0.2–0.4
DN40	G1–1/2"	35	32.9	63	0–1.6	0.3–0.7
				90	0–1.6	0.2–0.5
DN50	G2"	45	52.8	63	0–0.8	0.3–0.75
				90	0–1.6	0.2–0.6
				125	0–1.6	0.2–0.4
DN65	G2–1/2"	61	82.6	90	0–1.1	0.2–0.7
				125	0–1.6	0.2–0.55
DN80	G3"	80	127	125	0–1.6	0.2–0.65
DN100	G4"	90	143	125	0–1.2	0.4–0.5

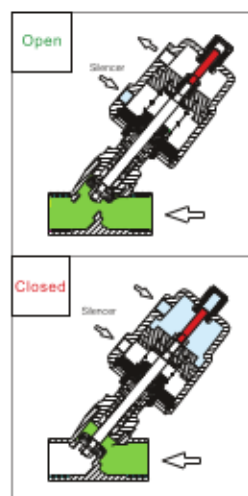


Pressure Data Sheet

Normally Open(NO)-Enter Above Seat

Suitable for long time open-valve application. With the silencer taken off, valve can be changed to double acting-NO type.

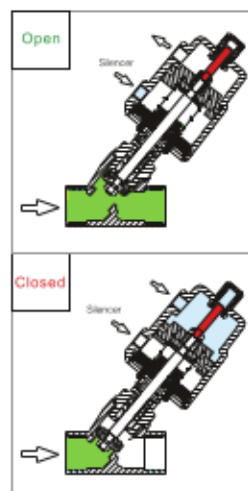
Size	Thread end	Orifice(mm)	Kv(m ³ /h)	Actuator(mm)	ΔP (MPa)	Control pressure (MPa)
DN10	G3/8"	13	3.8	40	0-1.6	≈ 0.3
				50	0-1.6	≈ 0.3
DN15	G1/2"	13	4.7	40	0-1.6	≈ 0.3
				50	0-1.6	≈ 0.3
DN20	G3/4"	18	9.5	50	0-1.2	≈ 0.3
DN25	G1"	24	18.1	50	0-0.3	≈ 0.3
				63	0-1.6	≈ 0.45
DN32	G1-1/4"	31	23.1	63	0-1.4	≈ 0.45
DN40	G1-1/2"	35	32.9	63	0-1.4	≈ 0.45
DN50	G2"	45	52.8	63	0-0.6	≈ 0.45



Normally Open(NO)-Enter Below Seat (NO water-hammer)

Suitable for long time open-valve application, avoid water hammer. With the silencer taken off, valve can be changed to double acting-NO type.

Size	Thread end	Orifice (mm)	Kv (m ³ /h)	Actuator (mm)	ΔP (MPa)	Control pressure (MPa)
DN10	G3/8"	13	3.8	40	0-1.6	0.2-0.5
				50	0-1.6	0.2-0.4
DN15	G1/2"	13	4.7	40	0-1.6	0.2-0.5
				50	0-1.6	0.2-0.4
DN20	G3/4"	18	9.5	50	0-1.6	0.2-0.6
				50	0-1.3	0.2-0.6
DN25	G1"	24	18.1	63	0-1.6	0.25-0.5
				63	0-1.3	0.25-0.6
DN32	G1-1/4"	31	23.1	63	0-0.7	0.25-0.6
				90	0-1.6	0.3-0.35
DN40	G1-1/2"	35	32.9	63	0-0.5	0.25-0.6
				90	0-1.2	0.25-0.6
DN50	G2"	45	52.8	90	0-0.75	0.25-0.5
				125	0-1.4	0.25-0.7
DN65	G2-1/2"	61	82.6	125	0-1.4	0.25-0.7
DN80	G3"	80	127	125	0-1.2	0.25-0.7



Order Instruction

